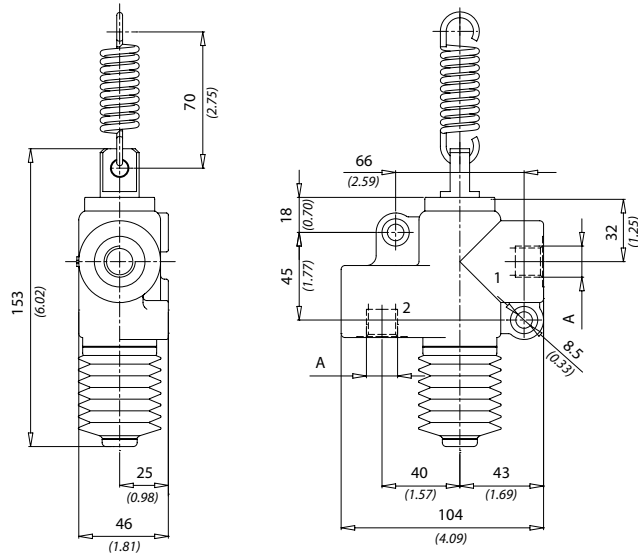
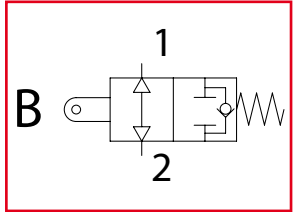
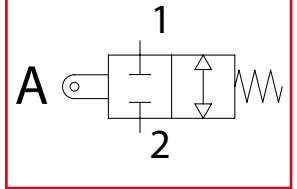




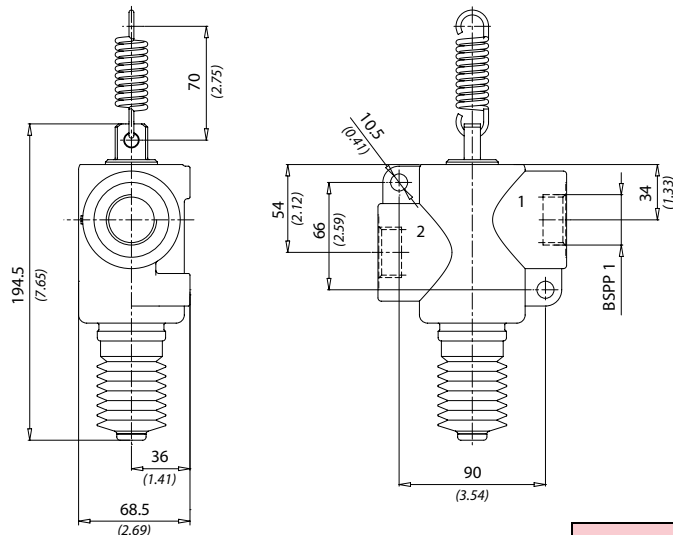
# FCT

Valvole di fine corsa a trazione  
Tug end-stroke valves

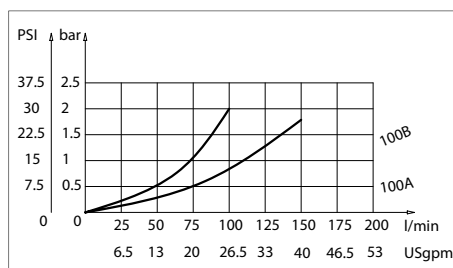
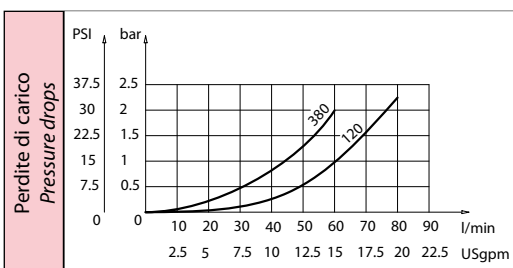


Dati tecnici Technical data	
Viscosità fluido Fluid viscosity	10-500 mm <sup>2</sup> /s 45 to 2000 ssu (6 to 420 cSt)
Classe di contaminazione Filtration	ISO code 16/13 SAE class 4 or better
Temperatura fluido Fluid temperature	-20°C +80°C -4°F +176°F
Temperatura ambiente Ambient temperature	-20°C +50°C -4°F +122°F

Caratteristiche tecniche Technical performances				
Codice Code	A	Portata Max Max flow l/min - USgpm	Pressione Max Max pressure bar/PSI	Peso approssimativo Approx weight Kg / lb
FCT380	BSPP 3/8	60 (16)	250 (3600)	1,7 (3.7)
FCT120	BSPP 1/2	80 (21)		1,8 (4)
FCT340	BSPP 3/4	100 (26)		1,9 (4.1)
FCT3100	BSPP 1	140 (37)	200 (2900)	2,5 (5.5)



[ mm ]  
[ Inches ]



Codice ordinazione Ordering code			
FCT - X - Y			
X	Dimensione / Size	Y	Schema - Circuit
380	BSPP 3/8	A	Centro chiuso Closed centre
120	BSPP 1/2		
340	BSPP 3/4	B	Centro aperto Open centre
100	BSPP 1		